



Bobcat[®]

One Tough Animal.

DIESEL FORKLIFTS

7-Series, 10.0 to 16.0 ton capacity D100S-7 / D120S-7 / D140S-7 / D160S-7



ONE TOUGH ANIMAL

OUR MISSION

We empower operators to accomplish more, while working in the toughest conditions and tightest situations. When our customers have the will, we provide the way.

INTRODUCTION



BOBCAT'S HISTORY

In 1958, Melroe Manufacturing Company introduced a compact front-end loader that evolved quickly into the M400, the world's first true skid steer loader. The company soon adopted what became the world-famous 'Bobcat' brand – and its success paved the way for the global compact equipment industry we know today.

YEARS OF EXPERIENCE

In 2021, Bobcat furthered its reach by acquiring Doosan Industrial Vehicle, increasing its capacity to provide customers with comprehensive business solutions. With Doosan's expertise in material handling and warehouse equipment dating back to its inaugural forklift in 1968, the company has established a global presence, with 400 dealers across 93 countries.



BOBCAT TODAY

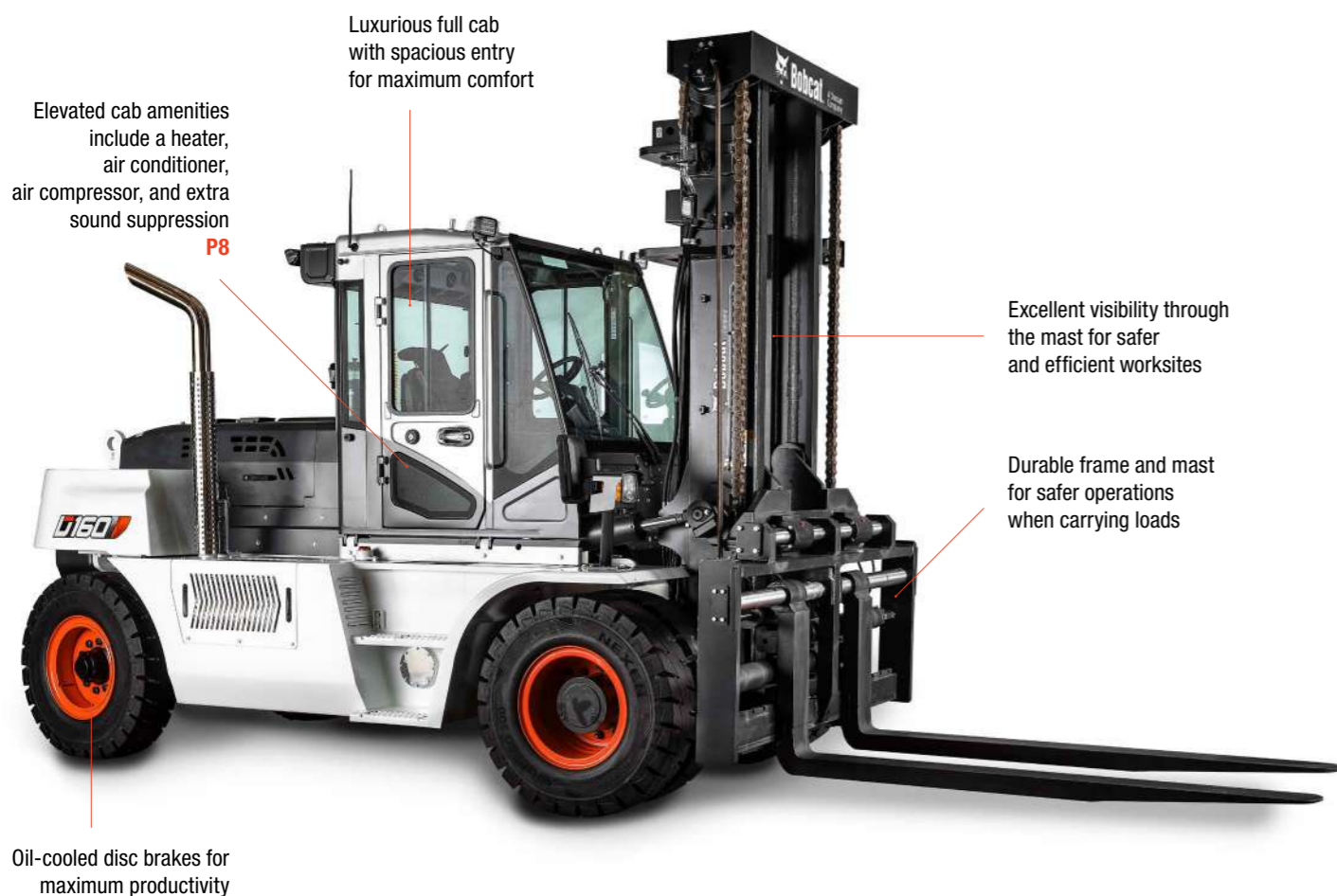
Now, with a diversified portfolio that includes forklifts and warehouse equipment, Bobcat serves as a one-stop solution for intralogistics needs, from loading shipping containers to optimizing warehouse operations. Produced in its South Korean factory, Bobcat's material handling machines offer the precision and durability customers expect.



TOUGH, AGILE & SAFE

► READY TO GIVE YOUR BUSINESS A LIFT

Boost your business with a diesel forklift that checks all the boxes: high-performance, powerful, and efficient engine, smooth and variable controls, and a full suite of safety features – all in a rugged, dependable machine that’s easy to service, ensuring low total cost of ownership.



Elevated cab amenities include a heater, air conditioner, air compressor, and extra sound suppression
P8

Luxurious full cab with spacious entry for maximum comfort

Excellent visibility through the mast for safer and efficient worksites

Durable frame and mast for safer operations when carrying loads

Oil-cooled disc brakes for maximum productivity



Proven powershift transmission for smooth transitions between forward and reverse
P7

Counterweight design for improved cooling performance
P12

Anti-slip step plate for increased safety when getting in and out of your machine

Electric tiltable cab for quick access and easy maintenance

Effortless and responsive driving thanks to the hydrostatic system
P7



► ULTIMATE PRODUCTIVITY

Do more every day, thanks to the high-performance yet efficient diesel engines that offer best-in-class travel and lifting speeds.
P 6-7



► ALL-DAY COMFORT

Get through the shift in comfort and with less fatigue with many quality-of-life features as standard including an ergonomic seat, colour display, plenty of legroom, anti-slip plate, and more.
P 8-9



► DRIVEN BY SAFETY

Enjoy peace of mind with the machine’s excellent all-around visibility, superb stability, and a full suite of safety features.
P 10-11



► MAXIMUM UPTIME

Minimize the total cost of ownership with longer service intervals and high-quality, genuine Bobcat parts and consumables. These components offer excellent value for money, helping your machine run smoother and last longer.
P 12-13

OUTSTANDING PRODUCTIVITY



▶ POWERFUL DIESEL ENGINES

Experience outstanding performance with fuel-efficient Deutz (Tier III) or HDI (Tier IV) engines and dependable components, providing high-end torque at low engine rpm while ensuring reduced fuel consumption.

▶ SUPERB GRADEABILITY AND DRAWBAR PULL

Leveraging the latest engine technology and optimal synchronization between the drive train and hydraulic system, our current model boasts significantly high drawbar pull and gradeability.



▶ ENHANCED PERFORMANCE AND EFFICIENCY

Experience the power of our 3-speed powershift transmission with a full electric auto-shift controller for increased capacity and superior power efficiency. Enjoy a 5% boost in fuel efficiency and optimized engine matching for better responsiveness, powerful performance, and smooth gear shifts. Plus, benefit from easy maintenance with a self-diagnosis system.

▶ FINE-TUNED POWERTRAIN

Unleash the power of productivity with our forklift's robust powertrain. Crafted with durable, high-quality components, our powertrain elevates efficiency and performance to propel your business forward.

COMFORT & CONTROLS



▶ EASILY ADJUSTABLE SEAT & COLUMN

The premium suspension seat provides ample space for the operator with all-day comfort during long shifts. The seat and the steering wheel column are easy to adjust to make sure every operator feels right at home in the cab.



▶ LUXURIOUS ZEUS CABIN

Experience peak comfort with the ZEUS Cabin. Designed for operator ease, it features accessible switches, ergonomic design, and spacious entry. With low noise, enhanced visibility, and other convenient features such as a heater or air conditioner, this cabin promises optimal comfort.



▶ IN-CAB DISPLAY

Conveniently access essential information on the large 5-inch screen of your in-cab display. Easily check and control the machine's performance settings with a simple touch for on-the-go convenience.



▶ FRONT AND REAR VIEW CAMERA

Equip your machine with front and/or rear view cameras that automatically feed into the in-cab display when in forward or reverse mode. This ensures the best view of your workplace without sacrificing comfort.

▶ CENTRALIZED CONTROL



All control switches are conveniently arranged in a single location for better and easier control of the machine.

▶ CONVENIENCE PACKAGE

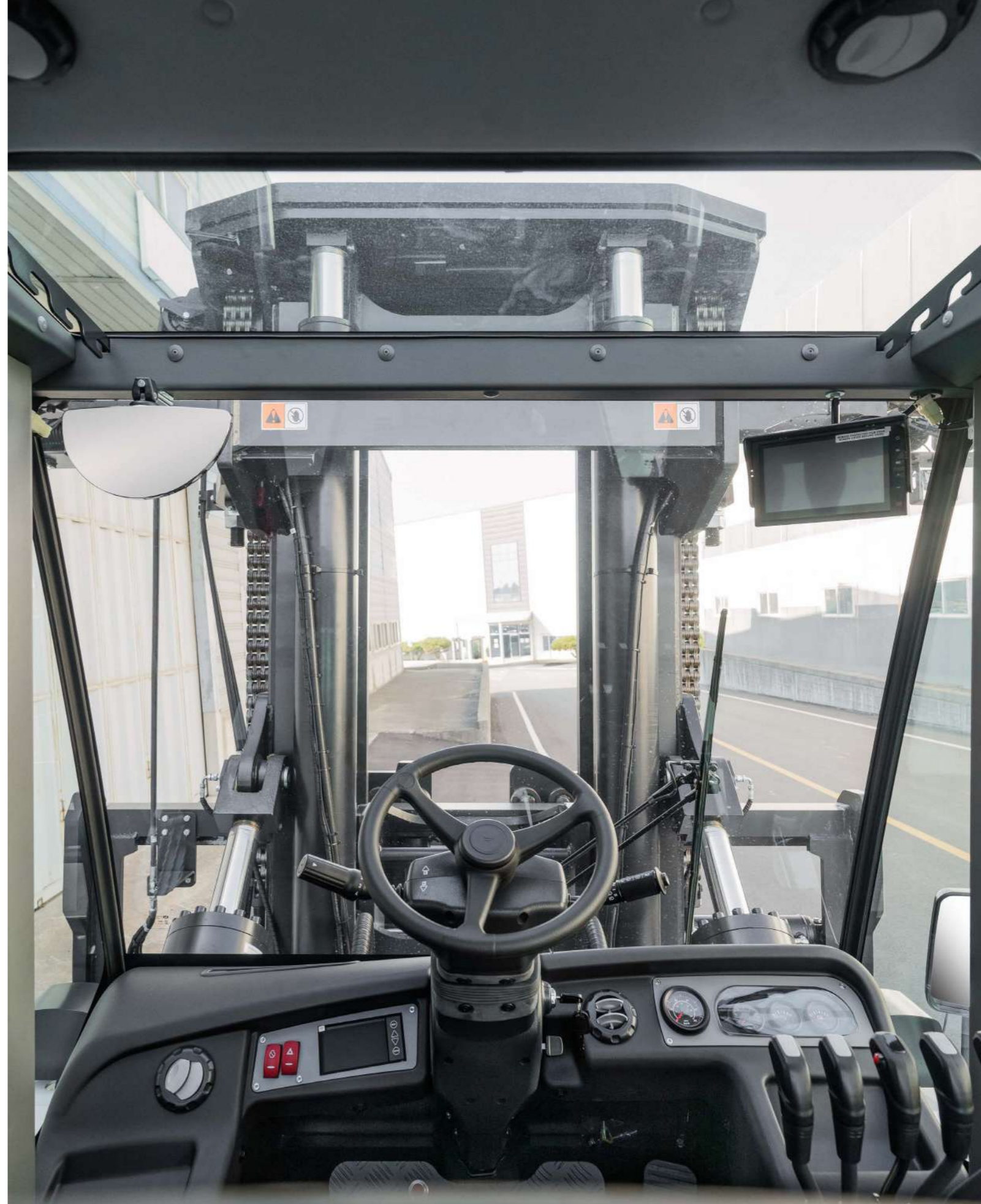


Deck mounted control valve levers simplify hydraulic actuation. A convenience tray keeps paperwork and supplies organized and within reach.

▶ RADIO & MP3 PLAYER



Enjoy even the longest shifts in our ZEUS cabin, equipped with a radio and MP3 player.



*Photo for illustration purposes only

SAFETY IN EVERY MOVE

▶ ADVANCED PROTECTION FOR YOU AND YOUR OPERATION

Bobcat forklifts have safety embedded in their DNA. Packed with tons of features that protect your health and your investment, these machines give you peace of mind in every task, every day.

▶ OPERATOR SENSING SYSTEM (OSS)

The intelligent Operator Sensing System (OSS) prevents unintended forklift movement by automatically stopping the truck's travel and mast lifting functions whenever the operator leaves the seat.



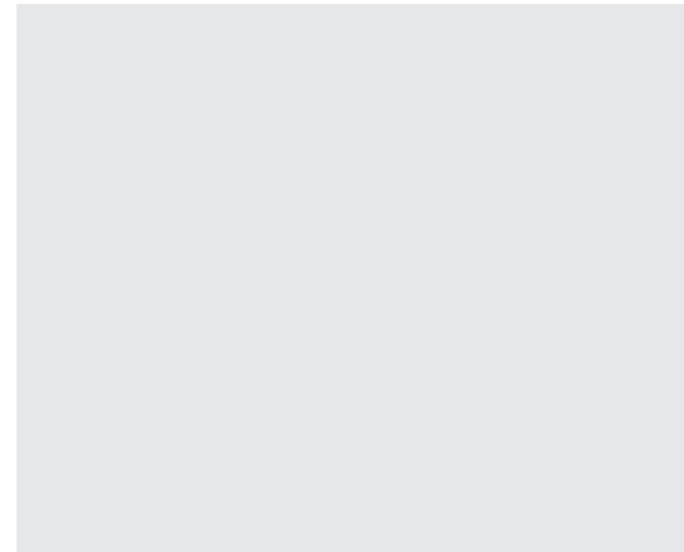
▶ BACKUP ALARM

The backup alarm emits a warning signal when the operator is driving in reverse, alerting those in the nearby vicinity.



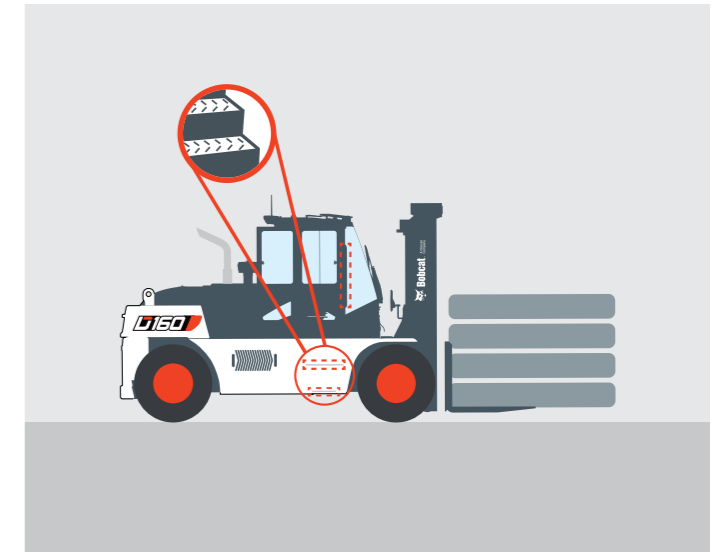
▶ WEIGHT SCALE

With the help of an integrated weight scale, operators can prevent truck overload, keeping the workplace safer and more secure.



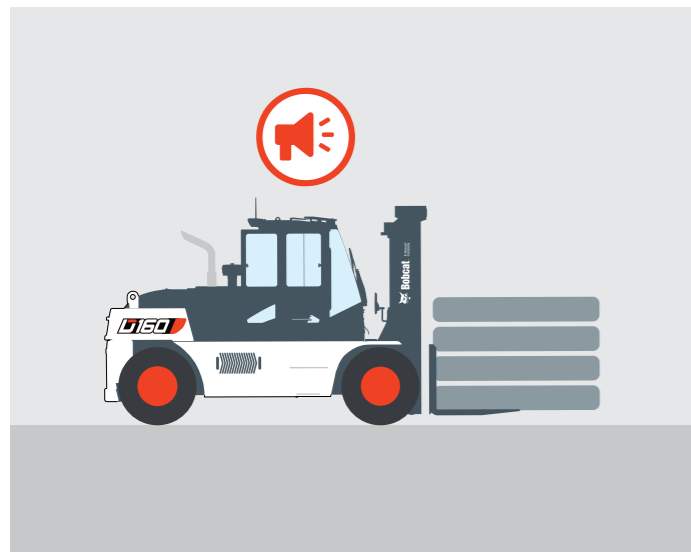
▶ ANTI-SLIP STEP & ENTRY BAR

The anti-slip step offers peace of mind when getting on and off the vehicle.



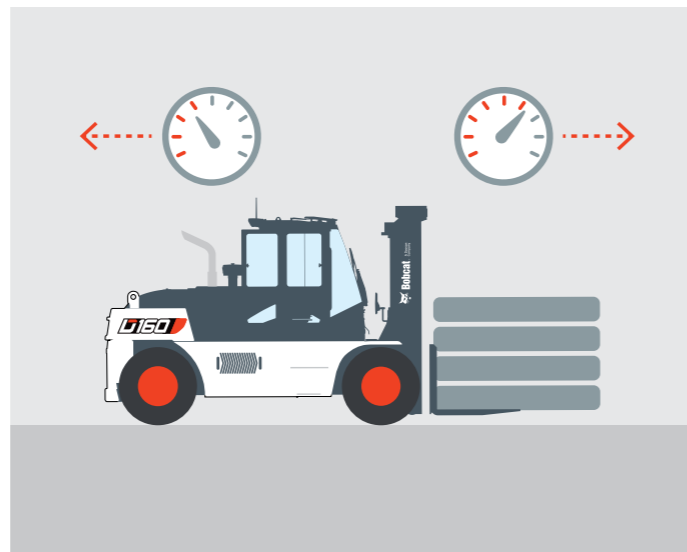
▶ SIREN AND MICROPHONE

The siren and microphone offer a quick way to alert nearby individuals, notifying them of the truck's presence with just a press of a button.



▶ GROUND SPEED CONTROL

Setting up a speed limit prevents the truck from going too fast. This limit can be customized for both forward and reverse directions.



▶ LARGE PANORAMIC AND REAR VIEW MIRROR

The large panoramic and rear-view mirrors provide excellent visibility to the rear working area, enhancing safety while contributing to overall productivity.



▶ POWERFUL LED LIGHTS

The powerful LED lights brighten even the darkest corners of your workplace, providing clear visibility to help you stay aware and safe.



BUILT TO LAST

▶ EXCELLENT RELIABILITY

Thanks to a powerful engine with auto-shift transmission, full floating drive axle, and shock-absorbing hydrostatic power steering, Bobcat 7-Series Diesel Forklifts are built tough to provide maximum uptime and dependability.



THERE'S NO TIME FOR DOWNTIME. STAND UP TO EVERY TASK THAT COMES YOUR WAY, DAY AFTER DAY.



▶ EXTENSIVE DEALER NETWORK

You can rely on our network of dealers and service partners who are always ready to help you.

▶ BOBCAT GENUINE PARTS

Quality components delivered to our dealers guarantee that all of our equipment is built to last, withstand the toughest conditions and provide reliable performance.

MAIN SPECIFICATIONS

MAIN SPECIFICATIONS									
		D100S-7		D120S-7		D140S-7		D160S-7	
		Tier III	Tier IV	Tier III	Tier IV	Tier III	Tier IV	Tier III	Tier IV
Emission regulation	kg								
Load capacity	kg	10000		12000		14000		16000	
Load center	mm	600		600		600		600	
Wheelbase	mm	3000		3000		3250		3250	
Height, mast lowered	mm	2970		2970		3170		3170	
Free lift	mm	0		0		0		0	
Lift	mm	3000		3000		3100		3100	
Height, mast extended	mm	4470		4470		4670		4670	
Height, overhead guard	mm	2890		2890		2950		2950	
Height of seat	mm	1455		1455		1526		1526	
Length to forkface	mm	4490		4505		4830		4830	
Overall width	mm	2350		2350		2490		2490	
Turning radius	mm	4290		4290		4620		4620	



STANDARD EQUIPMENT & OPTIONS

STANDARD EQUIPMENT & OPTIONS		
PRODUCTIVITY	TIER III	TIER IV
DEUTZ 6.1 liter L06 2V 124kW(166.3hp)	✓	-
HDI 5.9 liter DL06P 128.8kW(172.7hp)	-	✓
Power steering	✓	✓
Air compressor	•	•
Engine block heating system	-	•
RELIABILITY		
Oil-cooled disc brakes (ODB)	✓	✓
Dual element air cleaner	✓	✓
Precleaner	✓	✓
Full autoshift transmission	✓	✓
Rigid drive axle	✓	✓
Waterproof connectors	✓	✓
Engine guard	-	•
Reverse fan	-	•
ERGONOMICS		
Integrated instrument panel	✓	✓
Suspended leather seat	✓	✓
Grammer extra suspension seat	-	•
Top cover (modular cabin type A)	•	•
Full cabin includes rear view mirrors, low noise levels, electric tiltable cabin, wipers, MP3 player, and sun visor)	•	•
Tilting roof window	-	•
Heater	•	•
Operator fan	•	•
Air conditioner with rear condensor	•	•
Extra sound suppression	•	•
Adjustable steering column (tiltable)	•	•
Adjustable steering column (telescopic)	•	•

STANDARD EQUIPMENT & OPTIONS		
SAFETY	TIER III	TIER IV
Operator Sensing System (OSS)	✓	✓
Back-up alarm	✓	✓
Front (2) and rear (2) work LED lights	✓	✓
Combination LED lights	✓	✓
Panoramic rear view mirror	✓	✓
Additional (2) LED lights on mast	•	•
Additional (1) LED rear light	•	•
Strobe light	•	•
Rear (and front) view camera (with steering angle sensor)	•	•
Rear (blue) safety light	-	•
Siren and microphone	•	•
Ground speed control	-	•
Heated side mirrors	-	•
Weight scale	-	•
SERVICEABILITY		
Tiltable operator compartment	✓	✓
Lift eyes	•	•
Electric operator compartment (with support bar)	•	•
Centralized hydraulic measuring gauge ports	-	•

*This list is based on factory data. Standard or optional can vary for specific countries.

• = option
 ✓ = standard
 - = not available

YOUR TRUSTED BUSINESS PARTNER

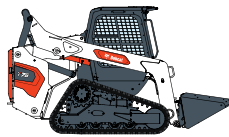
Your machine builds your business and reputation. Everything we put into Bobcat equipment is designed to make this possible. Strength, versatility, or agility, it's built around you.



340 MACHINES / 150 ATTACHMENT FAMILIES / 1 TOUGH ANIMAL



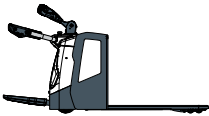
SKID-STEER LOADERS



COMPACT TRACK LOADERS



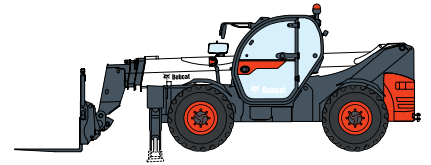
BACKHOE LOADERS



WAREHOUSE EQUIPMENT



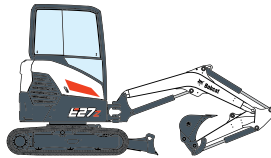
FORKLIFTS



TELEHANDLERS



LIGHT COMPACTION EQUIPMENT



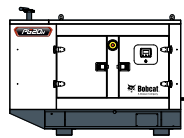
COMPACT EXCAVATORS



SMALL ARTICULATED LOADERS



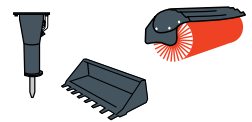
MINI TRACK LOADER



PORTABLE GENERATORS



AIR COMPRESSORS



ATTACHMENTS

DOOSAN

Bobcat is a Doosan Company. Doosan is a global leader in construction equipment, power & water solutions, engines, and engineering proudly serving customers and communities for more than a century. | Bobcat and the Bobcat logo are registered trademarks of Bobcat Company in the United States and various other countries. ©2024 Bobcat Company. All Rights Reserved.

Doosan Bobcat Korea Co., Ltd.

www.bobcat.com



Bobcat®