



Bobcat[®]

One Tough Animal.

DIESEL FORKLIFTS

7-Series, Pneumatic, 2.0 to 3.5 ton capacity **D20S-7 / D25S-7 / D30S-7 / D33S-7 / D35C-7**



ONE TOUGH ANIMAL

OUR MISSION

We empower operators to accomplish more, while working in the toughest conditions and tightest situations. When our customers have the will, we provide the way.

BOBCAT'S HISTORY

In 1958, Melroe Manufacturing Company introduced a compact front-end loader that evolved quickly into the M400, the world's first true skid steer loader. The company soon adopted what became the world-famous 'Bobcat' brand – and its success paved the way for the global compact equipment industry we know today.



YEARS OF EXPERIENCE

In 2021, Bobcat expanded its portfolio by acquiring Doosan Industrial Vehicle. This specialist in material handling equipment constructed its first forklift in 1968 and went on to establish a global presence with 400 dealers in 93 countries.



BOBCAT TODAY


Bobcat is expanding its portfolio with the addition of forklifts and reach trucks for the material handling industry. Offering a comprehensive line-up that will meet all your intralogistics needs. Bobcat forklifts and reach trucks are produced in our factory in Korea, while our premium quality warehouse equipment is made in Germany.




TOUGH, AGILE & SAFE

▶ READY TO GIVE YOUR BUSINESS A LIFT


Give your business a boost with a Diesel forklift that ticks all the boxes: a high-performance, powerful, and efficient engine; smooth and variable controls; and a full suite of safety features—all in a machine that is rugged, dependable, and easy to service, with a low total cost of ownership.

▶ ULTIMATE PRODUCTIVITY
Get more done daily thanks to the high-performing yet efficient G2 and Yanmar engines with best-in-class travel and lifting speeds. **P 6-7**



▶ ALL-DAY COMFORT
Experience a more comfortable shift with a range of standard quality-of-life features, including an ergonomic seat, instrument panel, ample legroom, anti-slip plate, and more. **P 8-9**



▶ DRIVEN BY SAFETY
Enjoy peace of mind provided by the machine's excellent all-around visibility, superb stability, and a full suite of safety features. **P 10-11**



▶ MAXIMUM UPTIME
Reduce your total ownership costs by extending service intervals and utilizing high-quality Bobcat genuine parts and consumables which contribute to smoother and longer-lasting machine performance. **P 12-13**

OUTSTANDING PRODUCTIVITY

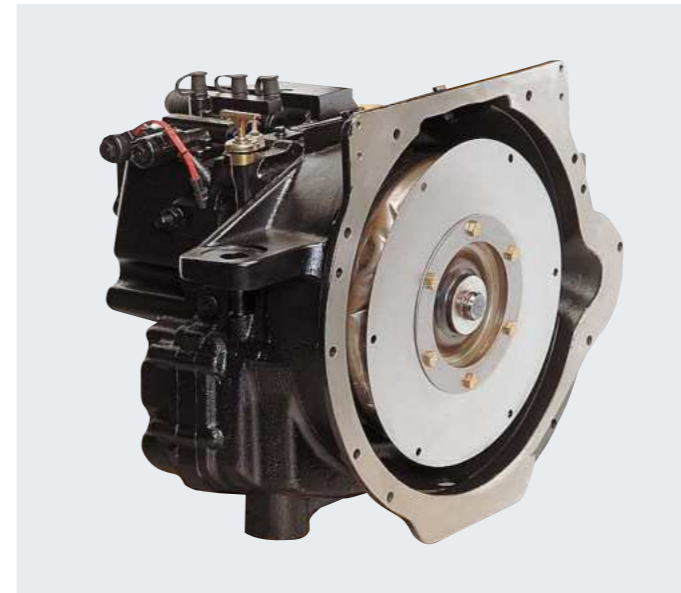


EXCELLENT VISIBILITY

Thanks to the precisely designed overhead guard with angled roof bars, low cowl height, and excellent visibility through the mast, you have the best view of the task at hand, enabling you to accomplish more every day.

POWERFUL DIESEL ENGINE

The high-performance yet efficient G2 or Yanmar engines, provide best-in-class travel and lifting speeds. A silent chain timing belt and an aluminum cylinder block design keep the noise level to a minimum.



EFFORTLESS DIRECTIONAL CHANGES

The well-tested powershift transmission precisely controls the clutch oil pressure, ensuring smooth shifts between forward and reverse. This careful control helps avoid transmission damage and makes the forklift stronger and longer-lasting.

POWERFUL BRAKING POWER

Oil-cooled disc brakes offer outstanding stopping performance and extended durability with minimal maintenance. The brake systems are entirely sealed to safeguard against external contaminants, ensuring reliable operation.

COMFORT & CONTROLS



▶ EASILY ADJUSTABLE SEAT & COLUMN

The premium suspension seat provides all-day comfort for long shifts and ample space for the operator. The seat and the steering wheel column are easy to adjust, allowing every operator to feel right at home in the cab.



▶ DELUXE SUSPENSION SEAT

The deluxe suspension seat prioritizes operator comfort with an adjustable seat back, extended seat travel length, and front-side weight resistance. These features enable multiple adjustments for the most comfortable seating experience.



▶ FULL OR MODULAR CABS

Equip your forklift with one of our factory-made cabs to conquer all weather conditions. Enhance comfort for all-day use by adding options such as a heater, operator fan, and power jack.



▶ REAR CAMERA DISPLAY

Equip your machine with a rear camera that feeds into the in-cab display when in reverse, ensuring you always have the best view of your workplace without sacrificing comfort.

▶ RADIO AND MP3 PLAYER



Add a radio and mp3 player to your cab to enjoy even the longest shifts.

▶ WELL-PLACED HANDLES



Stepping in and out of your vehicle is quick and comfortable, thanks to the well-placed entry bar and handles.

▶ ERGONOMIC CONTROLS



Thanks to the ergonomic design and perfect placement of control elements, operating this machine is as easy as can be.



SAFETY IN EVERY MOVE

▶ ADVANCED PROTECTION FOR YOU AND YOUR OPERATION

Bobcat forklifts have safety embedded in their DNA. Packed with tons of features that protect you and your investment, these machines provide peace of mind in every task, every day.

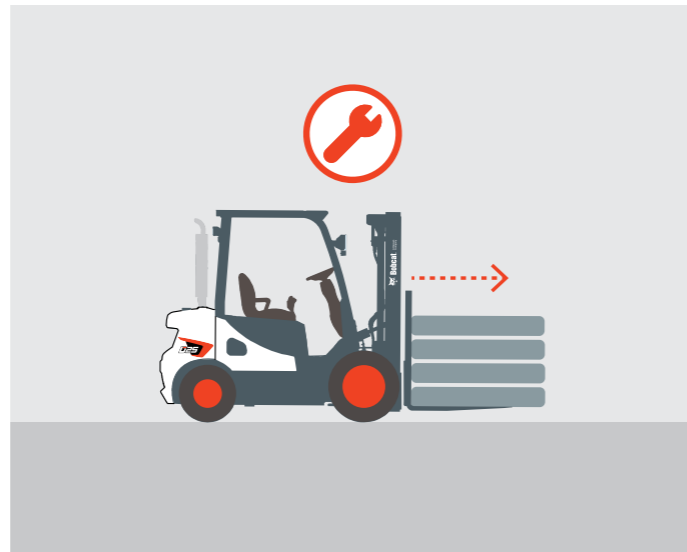
▶ OPERATOR SENSING SYSTEM (OSS)

The truck's travel and mast lifting functions stop when the operator leaves the seat, ensuring the forklift won't perform any unintended movements.



▶ LIMP HOME MODE

In the event of a critical issue, this feature enables the forklift to operate at reduced capacity, empowering operators to safely navigate to a designated area for inspection and repair.



▶ INTERLOCKING 4TH LEVER

The 4th lever will be locked until manually released by pressing the button on the lever. This guarantees load security, eliminating the risk of unintended release.



▶ WEIGHT SCALE

Never second-guess if you're overloading your forklift with our weight indicator or scale options.



▶ SEAT BELT SEQUENCE INTERLOCK

The operator must be seated with a fastened seatbelt to operate the truck.



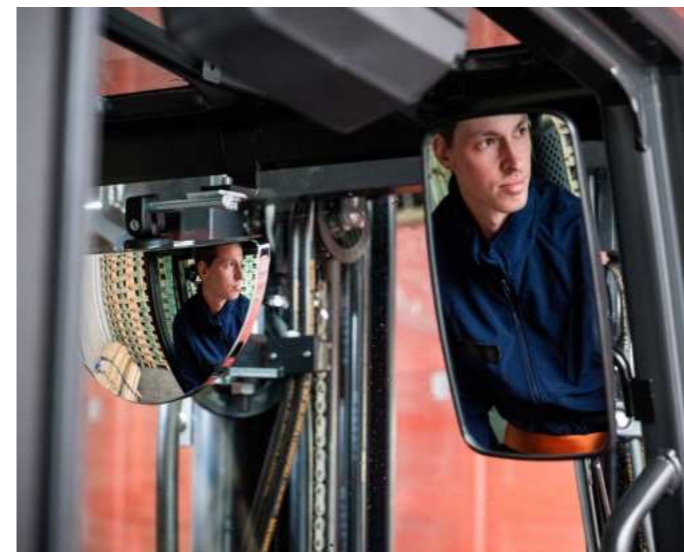
▶ PARKING BRAKE ALERT

Prioritize operator safety and safeguard against accidental movement with our parking brake warning system.



▶ LARGE PANORAMIC MIRROR

The large panoramic mirror improves safety conditions and boosts overall productivity by enhancing rear visibility.



▶ POWERFUL LED LIGHTS

The powerful LED lights can brighten even the darkest corners of your workplace, ensuring you're always aware of your surroundings.



BUILT TO LAST

▶ EXCELLENT RELIABILITY

Thanks to a powerful engine, dust- and water-resistant parts, and shock-absorbing hydrostatic power steering, Bobcat's 7-Series Diesel forklifts are built tough to provide you with maximum uptime and dependability.



Wide hood opening with hood locking cylinders, and a tool-less removable side panel for easy access to main components

The cyclone-type dual-element air filter protects the engine, extending its lifespan by shielding it from harmful contaminants

J-Hook Mounts distribute weight evenly

No mechanical connections between the steering wheel and steer axle to prolong maintenance intervals

Oil-cooled disc brakes (ODB) with a lifespan of up to 20 000 hours

Robust frame and overhead guard designed to withstand the demands of industrial environments and regular heavy use



Large capacity radiator and optimized airflow in the counterweight enhances the reliability and the durability

Six roller carriage for superior strength and durability when handling wider and longer loads

U-joint isolates powertrain from shock and vibration to reduce engine problems and leaks

Durable cast iron housing for precise axle alignment and extended life, with a high-tensile alloy steel shaft to boost torque transmission

THERE'S NO TIME FOR DOWNTIME. STAND UP TO EVERY TASK THAT COMES YOUR WAY. DAY AFTER DAY.



▶ EXTENSIVE DEALER NETWORK

You will receive the best after-sales service from your authorized local or national factory-trained dealer, backed by Bobcat's own customer service center. And Bobcat provides 100% parts inventory to insure any downtime is minimized. When you own a Bobcat forklift, our high quality, responsive customer support team comes with it.

▶ BOBCAT GENUINE PARTS

Quality components delivered to our dealers guarantee that all of our equipment is built to last, withstand the toughest conditions and provide reliable performance.

MAIN SPECIFICATIONS

MAIN SPECIFICATIONS						
		D20S-7	D25S-7	D30S-7	D33S-7	D35C-7
Load capacity	kg	2000	2500	3000	3250	3500
Load center	mm	500	500	500	500	500
Wheelbase	mm	1625	1625	1700	1700	1700
Height, mast lowered	mm	2175	2175	2165	2165	2165
Free lift	mm	152	152	152	152	152
Lift	mm	3230	3230	3230	3230	3000
Height, mast extended	mm	4490	4490	4490	4490	4260
Height, overhead guard	mm	2183	2183	2183	2183	2183
Height of seat	mm	1026	1026	1026	1026	1026
Length to forkface	mm	2530	2595	2700	2730	2765
Overall width	mm	1170	1170	1197	1197	1255
Turning radius	mm	2220	2265	2365	2395	2420

Specification values quoted in this specification sheet have been rounded. Performance may vary depending on operating conditions. Products and specifications are subject to improvement and change without prior notice.



STANDARD EQUIPMENT & OPTIONS

STANDARD EQUIPMENT & OPTIONS	
SAFETY	
Operator Sensing System	✓
Mast interlock – tilt, lift and lower	✓
2 front LED lights	✓
Spark arrestor	•
4 th lever interlock	•
Safety light	•
Back-up alarm	•
Rear view camera	•
ERGONOMICS	
Integrated instrument panel	✓
Excellent visibility	✓
Anti-slip step plate	✓
Adjustable steering column	✓
Panoramic mirror	•
Fingertip	•
Premium seat	•
Full cabin	•
Rear grab bar	•
Steering wheel knob	•

*This list is based on factory data. Standard or optional can vary for specific countries.

STANDARD EQUIPMENT & OPTIONS	
PRODUCTIVITY	
High powered, fuel efficient engines	✓
Inching pedal	✓
Pedal Location (accelerator, brake and inching)	✓
Drive-in-rack overhead guard	✓
Autotilt levelling	•
Quick disconnect hose couplings	•
RELIABILITY	
Waterproof connectors	✓
Dual element air cleaner	✓
Pre cleaner	•
Radiator screen	•
Vented side panel	•
SERVICEABILITY	
Tool-less side panel / floor plate	✓
Junction box	✓
Wide hood open angle	✓

• = option
 ✓ = standard
 – = not available

YOUR TRUSTED BUSINESS PARTNER

Your machine builds your business and reputation. Everything we put into Bobcat equipment is designed to make this possible. Strength, versatility, or agility, it's built around you.



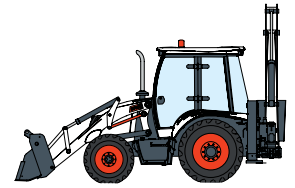
340 MACHINES / 150 ATTACHMENT FAMILIES / 1 TOUGH ANIMAL



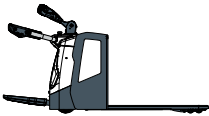
SKID-STEER LOADERS



COMPACT TRACK LOADERS



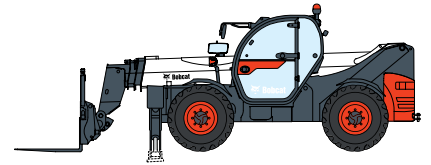
BACKHOE LOADERS



WAREHOUSE EQUIPMENT



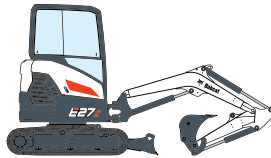
FORKLIFTS



TELEHANDLERS



LIGHT COMPACTION EQUIPMENT



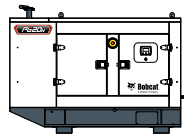
COMPACT EXCAVATORS



SMALL ARTICULATED LOADERS



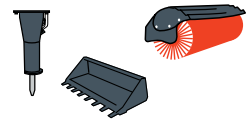
MINI TRACK LOADER



PORTABLE GENERATORS



AIR COMPRESSORS



ATTACHMENTS

DOOSAN

Bobcat is a Doosan Company. Doosan is a global leader in construction equipment, power & water solutions, engines, and engineering proudly serving customers and communities for more than a century. | Bobcat and the Bobcat logo are registered trademarks of Bobcat Company in the United States and various other countries. ©2024 Bobcat Company. All Rights Reserved.

Doosan Bobcat Korea Co., Ltd.

www.bobcat.com

May 2024

