



Bobcat®

One Tough Animal.

DIESEL FORKLIFTS

9-Series, Pneumatic, 4.0 to 5.5 ton capacity D35S-9 / D40S-9 / D45S-9 / D50C-9 / D55C-9 / D40SC-9 / D45SC-9 / D50SC-9 / D55SC-9



ONE TOUGH ANIMAL

OUR MISSION

We empower operators to accomplish more, while working in the toughest conditions and tightest situations. When our customers have the will, we provide the way.

BOBCAT'S HISTORY

In 1958, Melroe Manufacturing Company introduced a compact front-end loader that evolved quickly into the M400, the world's first true skid steer loader. The company soon adopted what became the world-famous 'Bobcat' brand – and its success paved the way for the global compact equipment industry we know today.



YEARS OF EXPERIENCE

In 2021, Bobcat furthered its reach by acquiring Doosan Industrial Vehicle, increasing its capacity to provide customers with comprehensive business solutions. With Doosan's expertise in material handling and warehouse equipment dating back to its inaugural forklift in 1968, the company has established a global presence, with 400 dealers across 93 countries.



BOBCAT TODAY

Now, with a diversified portfolio that includes forklifts and warehouse equipment, Bobcat serves as a one-stop solution for intralogistics needs, from loading shipping containers to optimizing warehouse operations. Produced in its South Korean factory, Bobcat's material handling machines offer the precision and durability customers expect.



TOUGH, AGILE & SAFE

DESIGNED FOR PRODUCTIVITY

Bobcat's D45SC-9 Series Forklifts come packed with powerful engines, intuitive controls, comfortable operation, and top-notch safety features. Our trucks are built tough to enhance your business productivity while keeping costs in check, thanks to a low cost of ownership.



POWERFUL AND EFFICIENT

Get more done daily thanks to high-performance engine that delivers up to 55 kW of power at 2 300 rpm. Boost your productivity with high driving/travel speed.

P 6-7



COMFORTABLE ALL SHIFT LONG

Enjoy the comfort of a spacious cab with plenty of legroom, increased headroom, a wide seat (Sears & Grammer), and tons of convenience features as standard.

P 8-9



SAFETY FIRST

Protect your investment, workforce, and handled goods with excellent all-around visibility, reverse lock brakes, and a host of other standard safety features.

P 10-11



RUGGED RELIABILITY

Discover the perfect blend of power, performance, and functionality with features like an IP65-rated connector, oil-cooled disc brakes, and enhanced cooling performance.

P 12-13

OUTSTANDING PRODUCTIVITY



▶ IMPROVED PRODUCTIVITY

Bobcat's 9 series forklifts outshine competitors with exceptional driving speeds, drawbar pull, and gradeability, ensuring swift and efficient operations.

▶ CUSTOMIZED PERFORMANCE

Tailor your performance with three distinct torque modes. Eco mode optimizes fuel efficiency, Standard mode handles typical tasks, and High mode boosts the truck's capability for heavy-duty operations.



▶ HYDRAULIC CONTROL

Experience the convenience of hydraulic control for lifting and tilting, providing efficient and precise handling for all of your material transport needs.

▶ OIL-COOLED DISC BRAKES

Enjoy oil-cooled disc brakes for better braking and faster cycles, giving you the confidence to navigate and stop quickly. This enhancement significantly speeds up task completion and boosts overall productivity.

COMFORT & CONTROLS



▶ IMPROVED VISIBILITY

Benefit from improved operator visibility in all working positions, thanks to a wider mast window, repositioned hydraulic hoses, and a flat bar-style overhead guard.



▶ DELUXE SUSPENSION SEAT

The deluxe suspension seat prioritizes operator comfort with both lever and fingertip controls. It features a larger seat recline, extended seat adjustment range, and weight resistance, offering customizable comfort.



▶ SPACIOUS OPERATOR COMPARTMENT

The cabin's ample legroom, adjustable steering column, and ergonomic operator pedals ensure ease of entry and exit for the operator.



▶ CONVENIENT FINGERTIP CONTROL

Operate long shifts comfortably with fingertip controls, designed to reduce operator fatigue while ensuring efficient, precise, and comfortable operation.

▶ CONVENIENCE TRAY



With a standard USB port and optional features such as a cup holder, document clipboard, and interior lighting, the operator can enjoy added convenience in every task.

▶ MORE HEAD ROOM



The lowered floor plate increases torso clearance by 26mm, providing the operator with more head space.

▶ FULL-COLOR DISPLAY WITH REAR VIEW CAMERA



Enjoy a standard 5-inch (optional 7-inch) display panel, that is bright, clear, and highly visible outdoors, keeping the operator informed about the machine's conditions.



SAFETY IN EVERY MOVE

▶ ADVANCED PROTECTION FOR YOU AND YOUR OPERATION

Bobcat forklifts have safety embedded in their DNA. Packed with tons of features that protect people, workplaces, and your investment, our machines provide peace of mind in every task, every day.

▶ REAR DETECTOR

The rear detector alerts the operator to obstacles behind the vehicle when traveling in reverse.



▶ ELECTRIC PARKING BRAKE (EPB)

The parking brake engages automatically to keep the vehicle stationary when the operator exits the seat.



▶ BACKUP ALARM

The backup alarm emits a warning signal when the operator is driving in reverse, alerting those in the nearby vicinity.



▶ REVERSE LOCK

The reverse lock allows the operator to change directions from forward to reverse only when the machine's speed is less than 3 km/h, ensuring smoother transitions.



▶ WEIGHT SCALE

With the help of an integrated weight scale, operators can prevent truck overload, keeping the workplace safer and more secure.



▶ GROUND SPEED CONTROL

Setting up a speed limit prevents the truck from going too fast. This limit can be customized for both forward and reverse directions.



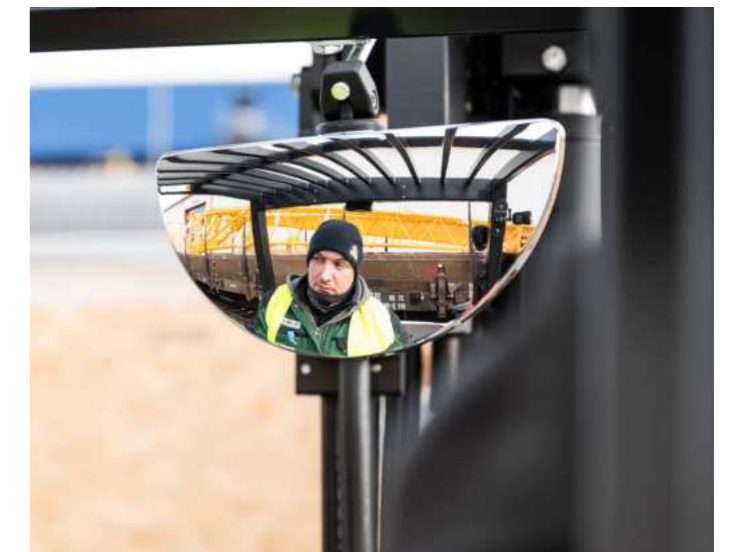
▶ REAR GRAB BAR WITH HORN

The rear grab bar provides stability during reverse maneuvers and tight space navigation. Plus, the horn can be easily activated with a push of a button conveniently located on the bar.



▶ REAR VIEW MIRROR

The rear view mirror provides more visibility, preventing accidents while reversing and avoiding collisions with objects and pedestrians.



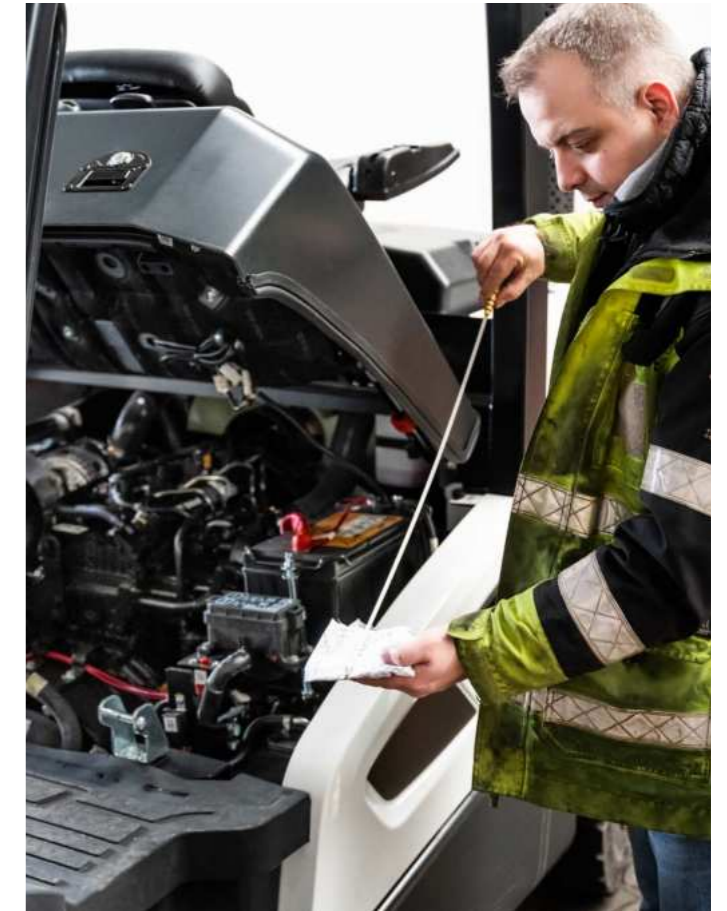
BUILT TO LAST

▶ A HERITAGE OF RELIABILITY

The impressive cooling capacity, extended service intervals, and maintenance-free engine are designed to minimize maintenance costs. Meanwhile, the robust frame, fully floating drive axle, and oil-cooled brakes ensure years of continuous productivity, day in and day out.



THERE'S NO TIME FOR DOWNTIME. STAND UP TO EVERY TASK THAT COMES YOUR WAY, DAY AFTER DAY.



▶ EXTENSIVE DEALER NETWORK

You will receive the best after-sales service from your authorized local or national factory-trained dealer, backed by Bobcat's own customer service center. And Bobcat provides 100% parts inventory to insure any downtime is minimized. When you own a Bobcat forklift, our high quality, responsive customer support team comes with it.

▶ BOBCAT GENUINE PARTS

Quality components delivered to our dealers guarantee that all of our equipment is built to last, withstand the toughest conditions and provide reliable performance.

MAIN SPECIFICATIONS

TECHNICAL DATA ACCORDING TO VDI 2198										
		D35S-9	D40S-9	D45S-9	D50C-9	D55C-9	D40SC-9	D45SC-9	D50SC-9	D55SC-9
Load capacity	kg	3 500	4 000	4 500	5 000	5 500	4 000	4 500	5 000	5 500
Load center	mm	600	600	600	600	600	500	500	500	500
Wheelbase	mm	2 015	2 015	2 115	2 115	2 115	2 015	2 015	2 115	2 115
Height, mast lowered	mm	2 255	2 230	2 230	2 380	2 380	2 225	2 230	2 230	2 380
Free lift	mm	160	160	160	170	170	160	160	160	170
Lift	mm	3 000	3 000	3 000	3 050	3 050	3 000	3 000	3 000	3 050
Height, mast extended	mm	4 265	4 270	4 420	4 470	4 470	4 265	4 270	4 420	4 470
Height, overhead guard	mm	2 225	2 230	2 230	2 230	2 230	2 225	2 230	2 230	2 230
Height of seat	mm	1 220	1 225	1 225	1 225	1 225	1 220	1 225	1 225	1 225
Length to forkface	mm	2 995	3 000	3 260	3 300	3 340	2 995	3 000	3 260	3 300
Overall width	mm	1 370	1 455	1 455	1 455	1 455	1 370	1 455	1 455	1 455
Turning radius	mm	2 755	2 800	2 850	2 870	2 900	2 755	2 800	2 850	2 870

Specification values quoted in this specification sheet have been rounded. Performance may vary depending on operating conditions. Products and specifications are subject to improvement and change without prior notice.



STANDARD EQUIPMENT & OPTIONS

STANDARD EQUIPMENT & OPTIONS		STANDARD EQUIPMENT & OPTIONS	
PRODUCTIVITY		SAFETY	
Power steering	✓	Electronic parking brake	✓
High powered, fuel efficient engine	✓	Automatic deceleration	✓
Multi-torque mode (Eco/Std/High)	✓	Overhead guard	✓
Electronic transmission	✓	Operating Sensing System (OSS)	✓
Autoshift controller	✓	Ground speed control	✓
Auto tilt leveling	•	Reverse lock	✓
Mono pedal	•	Speed limit	✓
ERGONOMICS		Seat belt interlock	•
Excellent visibility	✓	Lift eyes	•
Large entry grip bar	✓	Seat belt interlock	•
Anti-slip step plate	✓	LED combination lights	•
Adjustable steering column	✓	Rear safety light	•
USB port	✓	Emergency lamp and switch	•
Steering wheel knob	✓	Back up alarm	•
Large rear view mirror	✓	Zone light (red, blue)	•
Full color 5 inch display	✓	Panoramic mirror	•
Full color 7 inch display	•	Rear view camera	•
Fingertip	•	Overhead guard with top cover	•
NFC tag start	•	Auto tilt leveling	•
High full cabin (100 mm higher)	•	RELIABILITY	
Rear grab bar with horn	•	Oil-cooled disc brakes (ODB)	✓
Heater & air conditioner for full cabin	•	Great cooling performance	✓
Radio and MP3 for full cabin	•	Longer service intervals	✓
Premium suspension seat	•	Heavy duty radiator	✓
Operator fan	•	Radiator cover on the counterweight	✓
Tilting roof	•	Service notification	✓
Cup holder	•	High speed fan	✓
Interior lighting	•	Precleaner	•
SERVICEABILITY		Vented side panel	•
Dual element air cleaner and rain cap	✓	Belly plate	•
Centralized fuse and relay box	✓		
Easily opened side covers and floor plates	✓		
Easy access to components	✓		
EasyView (software to adjust parameters)	✓		
Fuel cap with key	•		

*This list is based on factory data. Standard or optional can vary for specific countries.

• = option
 ✓ = standard
 -- = not available

YOUR TRUSTED BUSINESS PARTNER

Your machine builds your business and reputation. Everything we put into Bobcat equipment is designed to make this possible. Strength, versatility, or agility, it's built around you.



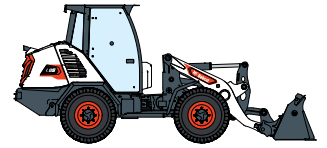
340 MACHINES / 150 ATTACHMENT FAMILIES / 1 TOUGH ANIMAL



SKID-STEER LOADERS



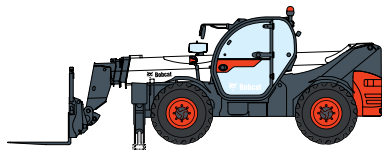
COMPACT TRACK LOADERS



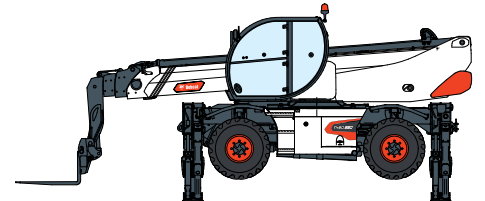
COMPACT WHEEL LOADERS



FORKLIFTS



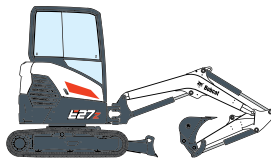
TELEHANDLERS



ROTARY TELEHANDLERS



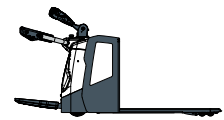
LIGHT COMPACTION EQUIPMENT



COMPACT EXCAVATORS



COMPACT TRACTORS



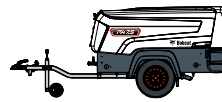
WAREHOUSE EQUIPMENT



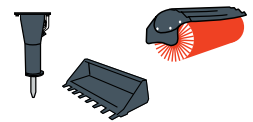
MINI TRACK LOADER



MOWERS



PORTABLE POWER



ATTACHMENTS

DOOSAN

Bobcat is a Doosan Company. Doosan is a global leader in construction equipment, power & water solutions, engines, and engineering proudly serving customers and communities for more than a century. | Bobcat and the Bobcat logo are registered trademarks of Bobcat Company in the United States and various other countries. ©Bobcat Company. All Rights Reserved.

Doosan Bobcat Korea Co., Ltd.



Bobcat®